



**Sheraton**<sup>®</sup>

NEW ORLEANS HOTEL



# Floor Plans and Capacity Charts



**Sheraton**<sup>®</sup>  
NEW ORLEANS HOTEL

## Meeting Space Overview – Part One

### SHERATON NEW ORLEANS HOTEL BY THE NUMBERS

Total Guestrooms: 1,110 rooms / 53 suites

Total Meeting Rooms: 54

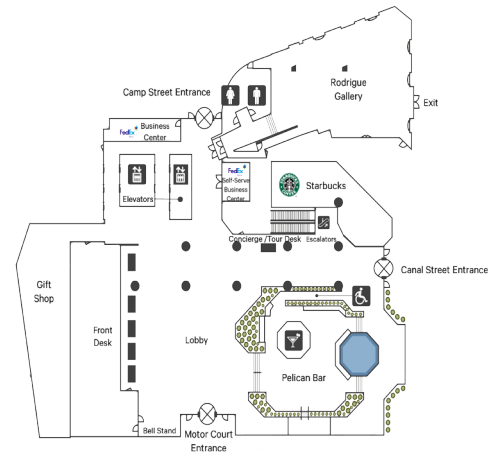
Maximum Group Size: 2,800

Total Meeting Space: 105,700 sq. ft.

Additional spaces for meetings and events, not displayed here, may also be available. Contact your hotel representative for more information.

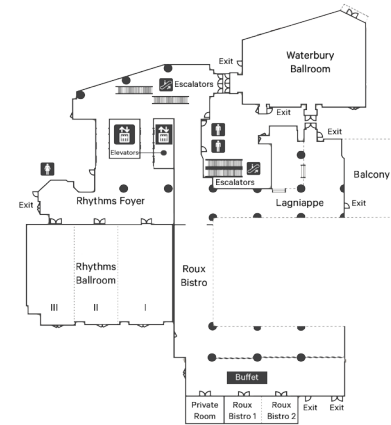
### FIRST FLOOR

- 1 Rodrigue Gallery
- 2 Pelican Bar
- 3 Starbucks
- 4 Joieful Concierge
- 5 FedEx Business Center



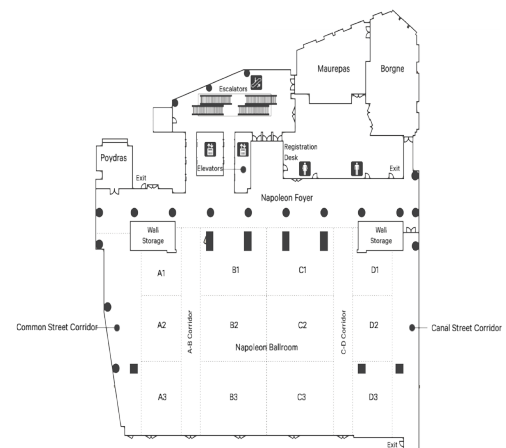
### SECOND FLOOR

- 1 Waterbury Ballroom
- 2 Rhythms
- 3 Lagniappe
- 4 Roux Bistro



### THIRD FLOOR

- 1 Napoleon Ballroom
- 2 Borgne
- 3 Maurepas
- 4 Poydras



This document contains approximate measurements and square footage that are for illustrative purposes only. We cannot guarantee the floor plan accuracy or completeness, therefore encourage you to review the space to make sure it is suitable for your event.

SHERATON NEW ORLEANS HOTEL  
500 Canal Street  
New Orleans, Louisiana 70130  
T 504 525 2500 F 504 595 5552  
sheratonneworleans.com



**Sheraton**<sup>®</sup>

NEW ORLEANS HOTEL

## Meeting Space Overview – Part Two

### SHERATON NEW ORLEANS HOTEL BY THE NUMBERS

Total Guestrooms: 1,110 rooms / 53 suites

Total Meeting Rooms: 54

Maximum Group Size: 2,800

Total Meeting Space: 105,700 sq. ft.

Additional spaces for meetings and events, not displayed here, may also be available. Contact your hotel representative for more information.

#### FOURTH FLOOR

- 1 Nottoway
- 2 Oak Alley
- 3 Bayside
- 4 Edgewood
- 5 Estherwood
- 6 Evergreen
- 7 Gallier
- 8 Oakley
- 9 Southdown
- 10 Crescent
- 11 Ellendale

#### FIFTH FLOOR

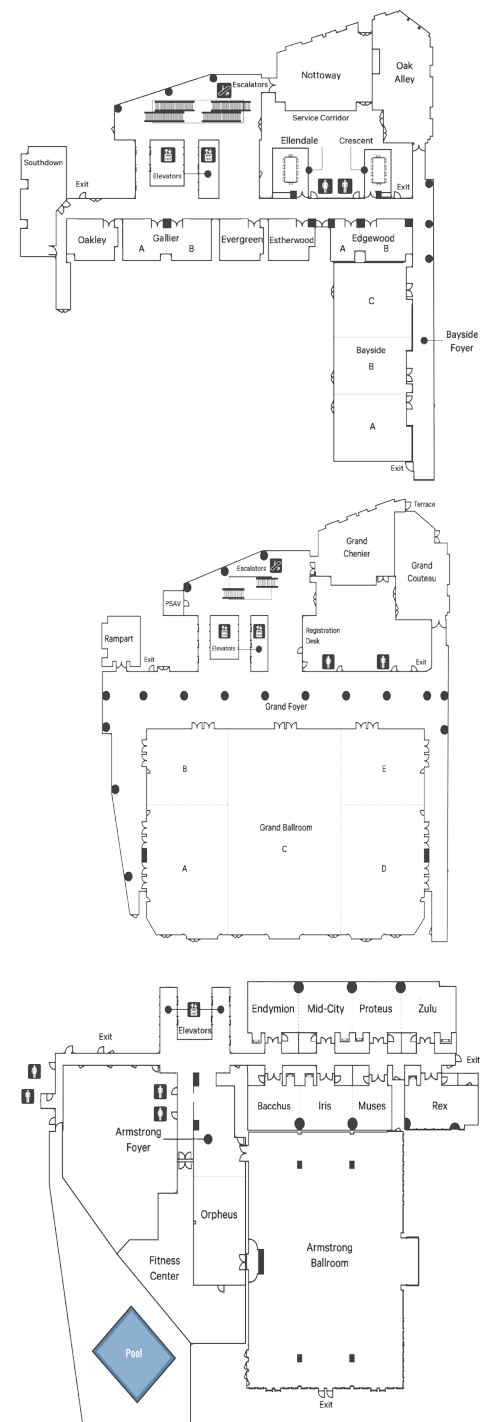
- 1 Grand Chenier
- 2 Grand Couteau
- 3 Grand Ballroom
- 4 Rampart

#### EIGHTH FLOOR

- 1 Endymion
- 2 Mid-City
- 3 Proteus
- 4 Zulu
- 5 Rex
- 6 Muses
- 7 Iris
- 8 Bacchus
- 9 Orpheus
- 10 Armstrong Ballroom
- 11 Sheraton Fitness
- 12 Pool

This document contains approximate measurements and square footage that are for illustrative purposes only. We cannot guarantee the floor plan accuracy or completeness, therefore encourage you to review the space to make sure it is suitable for your event.

SHERATON NEW ORLEANS HOTEL  
500 Canal Street  
New Orleans, Louisiana 70130  
T 504 525 2500 F 504 595 5552  
sheratonneworleans.com



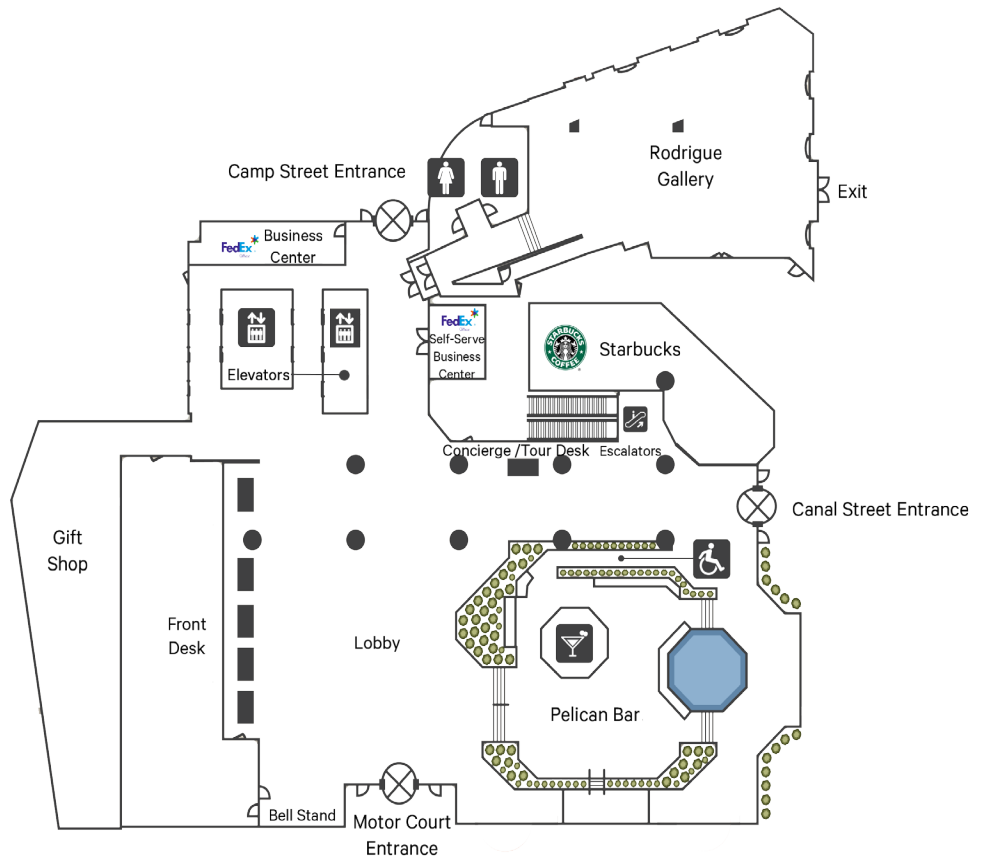


**Sheraton**<sup>®</sup>  
NEW ORLEANS HOTEL

## Meeting Space: First Floor

### FIRST FLOOR

- 1 Rodrigue Gallery
- 2 FedEx Business Center
- 3 Starbucks
- 4 Joieful Concierge
- 5 Pelican Bar
- 6 Gift Shop



	SQUARE FEET	DIMENSIONS	HEIGHT	BANQUET	THEATER	CONFERENCE	RECEPTION	CLASSROOM	U-SHAPE	HOLLOW SQUARE
RODRIGUE GALLERY	3,529	74' x 66'	13'	200	330	30	300	210	36	40*
PELICAN BAR	3,024	73' x 67'	35'1"	-	-	-	300	-	-	-

CONTACT YOUR HOTEL REPRESENTATIVE FOR ADDITIONAL CAPACITIES FOR ROUNDS

**SHERATON NEW ORLEANS HOTEL**  
500 Canal Street  
New Orleans, Louisiana 70130  
T 504 525 2500 F 504 595 5552  
sheratonneworleans.com

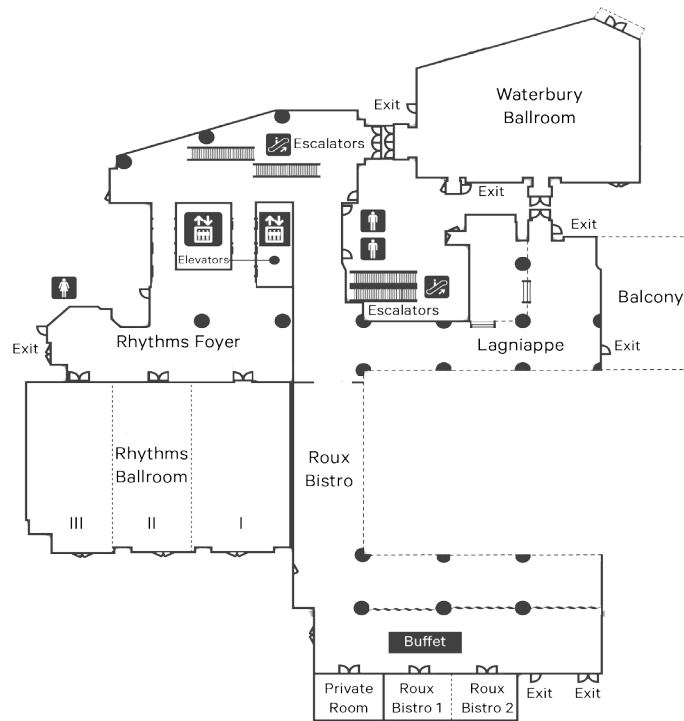


**Sheraton**<sup>®</sup>  
NEW ORLEANS HOTEL

## Meeting Space: Second Floor

### SECOND FLOOR

- 1 Waterbury Ballroom
- 2 Lagniappe
- 3 Roux Bistro
- 4 Rhythms



	SQUARE FEET	DIMENSIONS	HEIGHT	BANQUET	THEATER	CONFERENCE	RECEPTION	CLASSROOM	U-SHAPE	HOLLOW SQUARE
WATERBURY BALLROOM	3,778	80' x 63'	17'8"	200	382	60	350	186	69	72
LAGNIAPPE	2,728	77' x 57'	17'	90	-	-	200	-	-	-
RHYTHMS BALLROOM	5,109	61' x 86'	15'5"	340	588	72	550	360	84	96
RHYTHMS FOYER	1,918	34' x 79'	17'	-	-	-	150	-	-	-
RHYTHMS I	1,925	61' x 32'	15'5"	100	210	48	200	132	48	60
RHYTHMS II	1,549	61' x 28'	15'5"	100	168	48	165	108	45	48
RHYTHMS III	1,635	61' x 26'	15'5"	90	150	48	170	90	45	48

\*CONTACT YOUR HOTEL REPRESENTATIVE FOR ADDITIONAL CAPACITIES FOR ROUNDS.

**SHERATON NEW ORLEANS HOTEL**  
500 Canal Street  
New Orleans, Louisiana 70130  
T 504 525 2500 F 504 595 5552  
sheratonneworleans.com

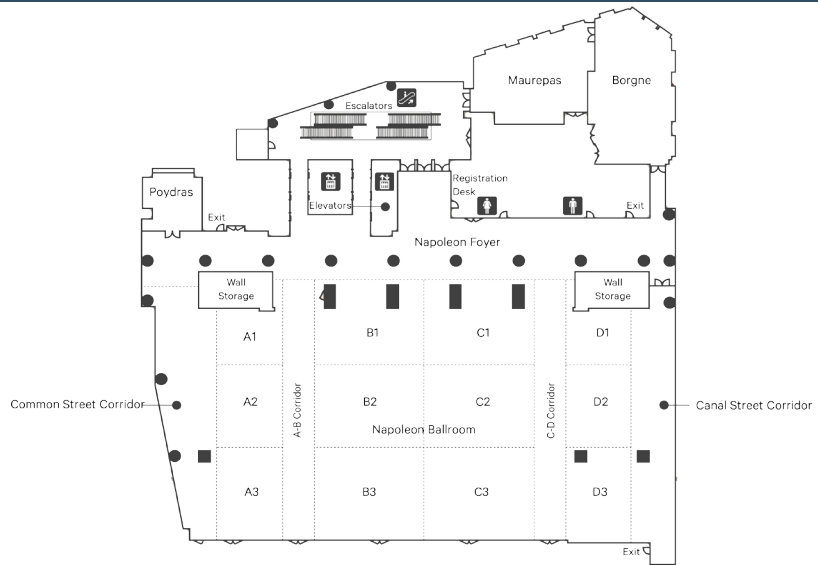


**Sheraton**<sup>®</sup>  
NEW ORLEANS HOTEL

## Meeting Space: Third Floor

### THIRD FLOOR

- 1 Maurepas
- 2 Borgne
- 3 Napoleon Ballroom
- 4 Poydras



	SQUARE FEET	DIMENSIONS	HEIGHT	BANQUET	THEATER	CONFERENCE	RECEPTION	CLASSROOM	U-SHAPE	HOLLOW SQUARE
MAUREPAS	1,674	51' x 45'	12'1"	90	170	36	176	96	33	42
BORGNE	2,118	68' x 36"	12'4"	150	180	48	200	132	48	60
NAPOLEON BALLROOM	22,551	122' x 220'	13'7"	1,630	1,930	-	2,225	1,200	-	-
NAPOLEON & FOYER	28,039	169' x 220'	13'7"	-	-	-	2,800	-	-	-
NAPOLEON A1	691	36' x 27'	13'7"	20	48	18	72	18	12	18
NAPOLEON A2	951	35' x 27'	13'7"	40	70	24	100	30	32	30
NAPOLEON A3	1,078	40' x 27'	13'7"	60	80	24	113	63	24	30
NAPOLEON A1 A2 A3	2,720	112' x 27'	13'7"	180	250	60	286	171	60	78
NAPOLEON B1	1,546	36' x 45'	13'7"	60	130	30	162	60	30	36
NAPOLEON B2	1,592	35' x 45'	13'7"	90	160	30	167	72	39	48
NAPOLEON B3	1,806	40' x 45'	13'7"	90	180	30	190	108	40	44
NAPOLEON B1 B2 B3	4,944	112' x 45'	13'7"	270	520	60	500	315	69	96
NAPOLEON C1	1,553	36' x 45'	13'7"	60	130	30	163	60	30	36
NAPOLEON C2	1,600	35' x 45'	13'7"	90	160	30	168	72	33	44
NAPOLEON C3	1,814	40' x 45'	13'7"	90	180	30	190	108	39	48
NAPOLEON C1 C2 C3	4,697	112' x 45'	13'7"	270	500	60	522	324	69	96
NAPOLEON D1	682	36' x 27'	13'7"	20	40	18	71	18	12	18
NAPOLEON D2	941	35' x 27'	13'7"	40	70	24	100	30	24	30
NAPOLEON D3	1,071	41' x 27'	13'7"	60	80	24	112	60	24	30
NAPOLEON D1 D2 D3	2,694	113' x 27'	13'7"	170	165	60	285	105	60	78
POYDRAS	553	27' x 25'	10'3"	20	30	18	58	24	12	18

\*CONTACT YOUR HOTEL REPRESENTATIVE FOR ADDITIONAL CAPACITIES FOR ROUNDS

**SHERATON NEW ORLEANS HOTEL**  
500 Canal Street  
New Orleans, Louisiana 70130  
T 504 525 2500 F 504 595 5552  
sheratonneworleans.com



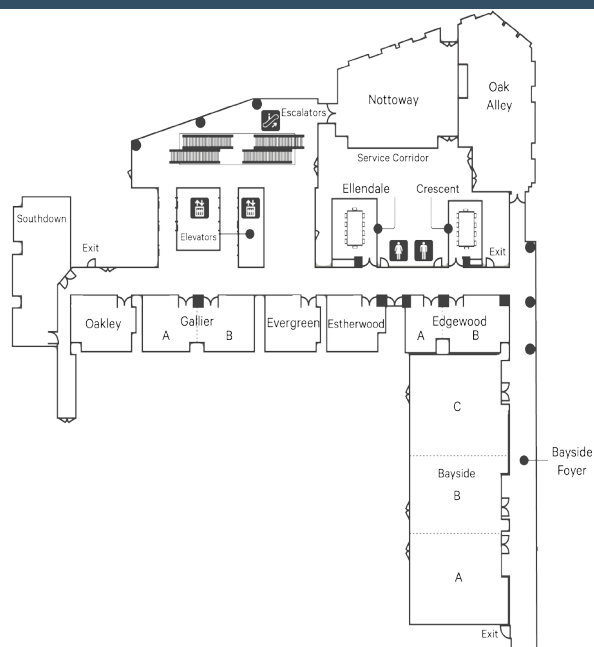


**Sheraton**<sup>®</sup>  
NEW ORLEANS HOTEL

## Meeting Space: Fourth Floor

### FOURTH FLOOR

- 1 Nottoway
- 2 Oak Alley
- 3 Bayside
- 4 Edgewood
- 5 Estherwood
- 6 Evergreen
- 7 Gallier
- 8 Oakley
- 9 Southdown
- 10 Crescent
- 11 Ellendale



	SQUARE FEET	DIMENSIONS	HEIGHT	BANQUET	THEATER	CONFERENCE	RECEPTION	CLASSROOM	U-SHAPE	HOLLOW SQUARE
NOTTOWAY	1,861	52' x 45'	8'7"	80	150	32	180	114	30	42
OAK ALLEY	1,828	67' x 32'	9'2"	110	150	48	180	100	48	54
BAYSIDE FOYER	1,640	15' x 132'	8'8"	-	-	-	160	-	-	-
BAYSIDE A	1,370	42' x 34'	8'4"	90	125	30	140	78	32	42
BAYSIDE B	1,093	42' x 29'	8'4"	60	90	24	100	51	30	24
BAYSIDE C	1,497	42' x 38'	8'4"	90	125	30	150	75	32	42
BAYSIDE ABC	3,813	42' x 101'	8'4"	220	404	84	380	228	84	90
EDGEWOOD A	267	17' x 16'	8'4"	10	20	10	20	9	-	-
EDGEWOOD B	503	21' x 28'	8'4"	30	40	10	50	20	15	-
EDGEWOOD AB	771	17' x 44'	8'4"	40	60	24	70	30	20	24
ESTHERWOOD	443	17' x 25'	8'3"	30	40	12	40	20	12	12
EVERGREEN	419	20' x 23'	8'3"	30	35	12	40	18	12	12
GALLIER A	443	21' x 24'	8'3"	30	30	16	40	18	12	16
GALLIER B	429	21' x 23'	8'3"	20	30	16	40	18	12	16
GALLIER AB	873	21' x 47'	8'3"	50	72	32	88	30	36	40
OAKLEY	473	21' x 27'	8'4"	40	40	14	40	20	12	14
SOUTHDOWN	1,086	24' x 55'	8'4"	70	90	36	100	54	21	24
CRESCENT	317	21' x 14'	8'3"	-	-	12	-	-	-	-
ELLENDALE	445	25' x 19'	8'3"	-	-	12	-	-	-	-

\*CONTACT YOUR HOTEL REPRESENTATIVE FOR ADDITIONAL CAPACITIES FOR ROUNDS

**SHERATON NEW ORLEANS HOTEL**  
500 Canal Street  
New Orleans, Louisiana 70130  
T 504 525 2500 F 504 595 5552  
sheratonneworleans.com

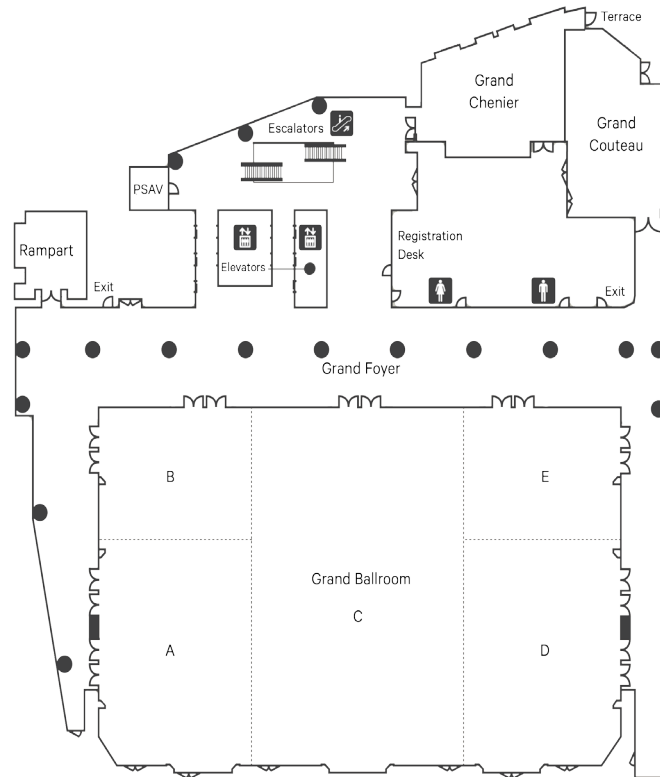


**Sheraton**<sup>®</sup>  
NEW ORLEANS HOTEL

## Meeting Space: Fifth Floor

### FIFTH FLOOR

- 1 Grand Chenier
- 2 Grand Couteau
- 3 Grand Ballroom
- 4 Rampart



	SQUARE FEET	DIMENSIONS	HEIGHT	BANQUET	THEATER	CONFERENCE	RECEPTION	CLASSROOM	U-SHAPE	HOLLOW SQUARE
GRAND CHENIER	1,750	57' x 45'	8.7"	100	143	46	150	78	39	36
GRAND COUTEAU	1,591	57' x 34'	10.6"	90	126	42	150	84	42	46
GRAND FOYER	9,218	154' x 219'	10.1"	-	-	-	900	-	-	-
GRAND BALLROOM	18,710	110' x 176'	21.3"	1,350	2,576	-	1,968	1,512	99	144
GRAND A	3,514	70' x 52'	21.3"	240	350	54	350	252	72	88
GRAND B	1,961	39' x 52'	21.3"	120	189	36	200	90	39	48
GRAND C	7,612	110' x 71'	21.3"	450	850	72	800	456	102	132
GRAND D	3,607	70' x 53'	21.3"	240	350	54	350	252	72	88
GRAND E	2,008	39' x 53'	21.3"	120	189	36	200	90	39	48
RAMPART	580	27' x 24'	8.4"	20	40	12	50	18	18	24

\*CONTACT YOUR HOTEL REPRESENTATIVE FOR ADDITIONAL CAPACITIES FOR ROUNDS

**SHERATON NEW ORLEANS HOTEL**  
500 Canal Street  
New Orleans, Louisiana 70130  
T 504 525 2500 F 504 595 5552  
sheratonneworleans.com



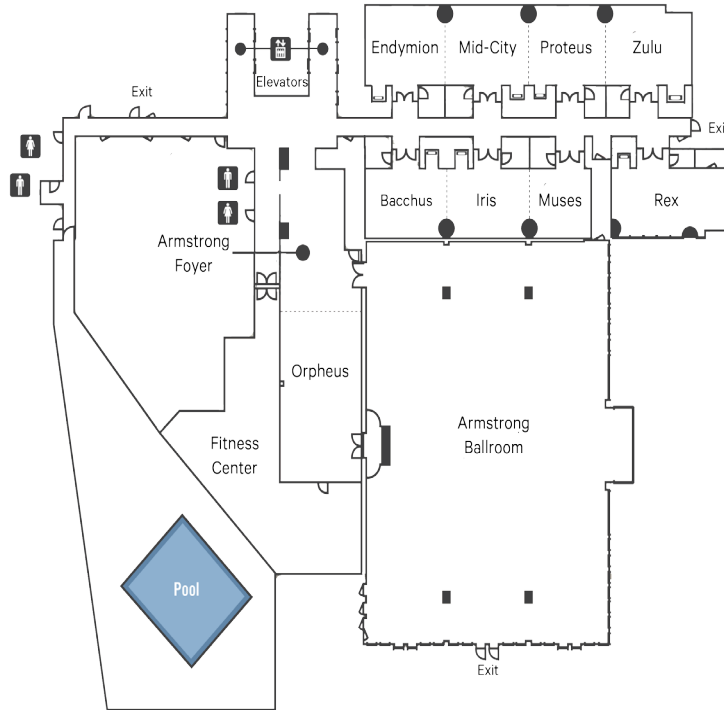


**Sheraton**<sup>®</sup>  
NEW ORLEANS HOTEL

## Meeting Space: Eighth Floor

### EIGHTH FLOOR

- 1 Endymion
- 2 Mid-City
- 3 Proteus
- 4 Zulu
- 5 Rex
- 6 Muses
- 7 Iris
- 8 Bacchus
- 9 Orpheus
- 10 Armstrong Ballroom
- 11 Sheraton Fitness
- 12 Pool



	SQUARE FEET	DIMENSIONS	HEIGHT	BANQUET	THEATER	CONFERENCE	RECEPTION	CLASSROOM	U-SHAPE	HOLLOW SQUARE
ENDYMION	565	22' x 25'	8'4"	30	30	18	50	16	18	22
MID-CITY	619	22' x 26'	8'4"	30	30	18	50	18	18	22
PROTEUS	582	22' x 24'	8'4"	30	30	18	50	18	18	22
ZULU	623	22' x 27'	8'4"	30	30	18	50	18	18	22
END/MID/PRO/ZUL	2,390	22' x 102'	8'4"	140	200	-	230	120	-	-
REX	733	19' x 36'	8'5"	-	-	20	-	-	-	-
MUSES	404	19' x 19'	8'4"	20	24	12	40	18	14	20
IRIS	548	19' x 26'	8'4"	30	30	16	40	18	20	24
BACCHUS	552	19' x 26'	8'4"	30	30	16	40	18	20	24
MUS/IRI/BAC	1,473	19' x 71'	8'4"	90	100	42	155	75	45	48
ORPHEUS	1,146	45' x 25'	8'7"	70	100	30	120	48	30	40
ARMSTRONG FOYER	840	38' x 25'	8'7"	-	-	-	80	-	-	-
ARMSTRONG BALLROOM	8,230	85' x 110'	32'2"	550	720	48	800	390	88	96

\*CONTACT YOUR HOTEL REPRESENTATIVE FOR ADDITIONAL CAPACITIES FOR ROUNDS

**SHERATON NEW ORLEANS HOTEL**  
500 Canal Street  
New Orleans, Louisiana 70130  
T 504 525 2500 F 504 595 5552  
sheratonneworleans.com



Sheraton®

NEW ORLEANS HOTEL



SHERATON NEW ORLEANS HOTEL  
500 Canal Street  
New Orleans, Louisiana 70130  
T 504 525 2500 F 504 595 5552  
sheratonneworleans.com

©2015-2016 Starwood Hotels & Resorts Worldwide, Inc. All Rights Reserved. Sheraton and its logos are the trademarks of Starwood Hotels & Resorts Worldwide, Inc., or its affiliates.